

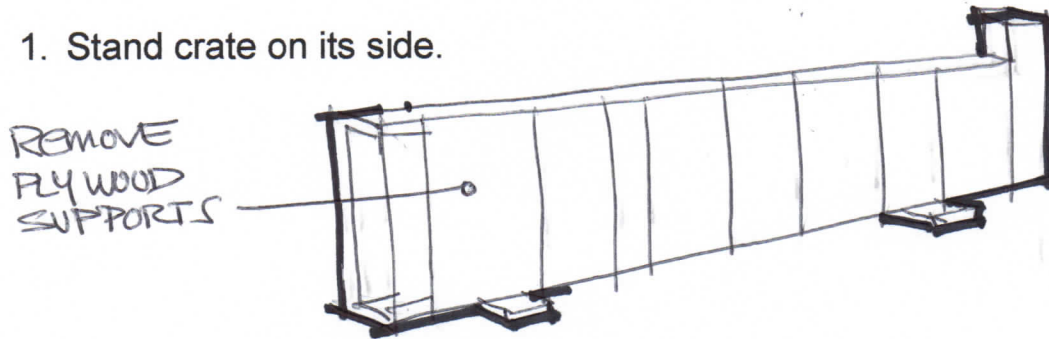
IMPORTANT:

DO NOT REMOVE CRATE that supports the counter top.

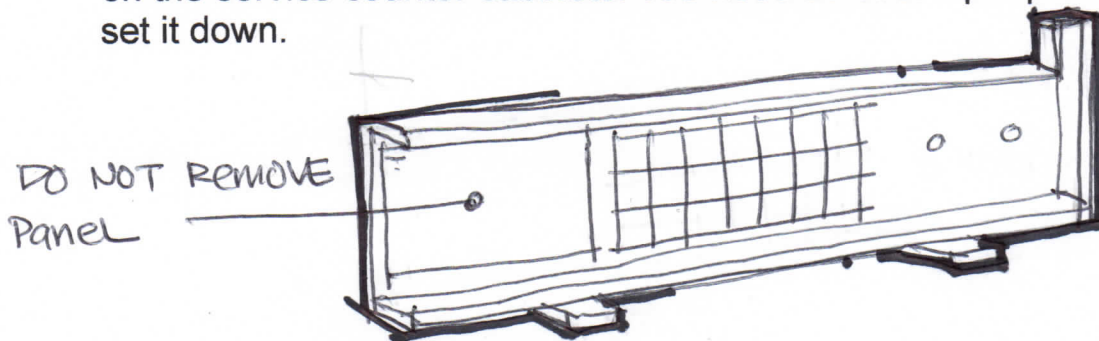
Make sure the service counter cabinets are installed properly before setting the counter top in place.

Please follow these steps when installing counter top.

1. Stand crate on its side.

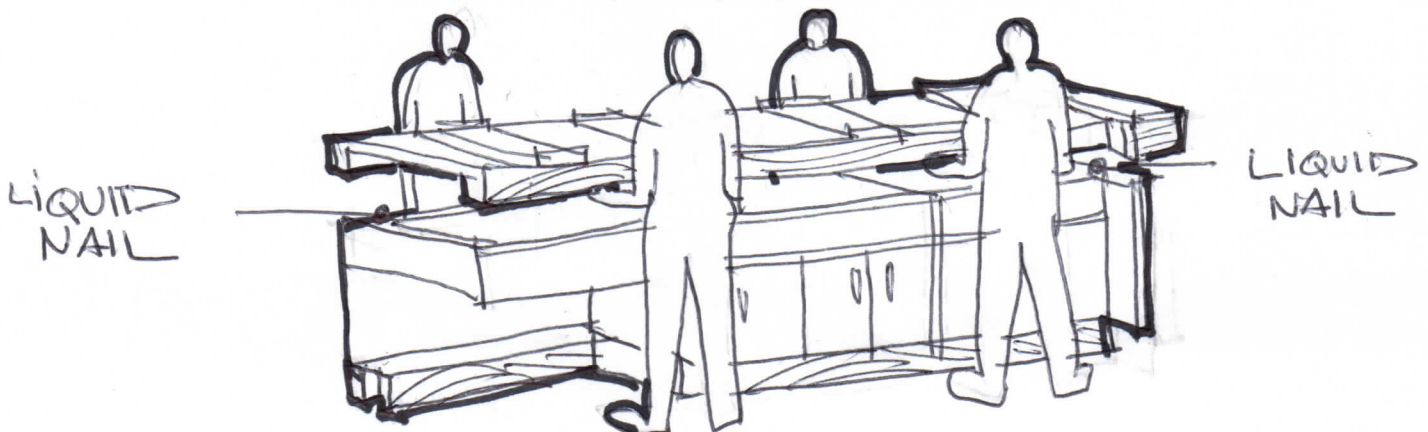


2. Remove plywood supports to expose the bottom of the counter top. **DO NOT remove** the 1/2" plywood panel that supports the cold topping cutout. Flip it down carefully and get ready to set it on the service counter cabinets. You need at least 4 people to set it down.

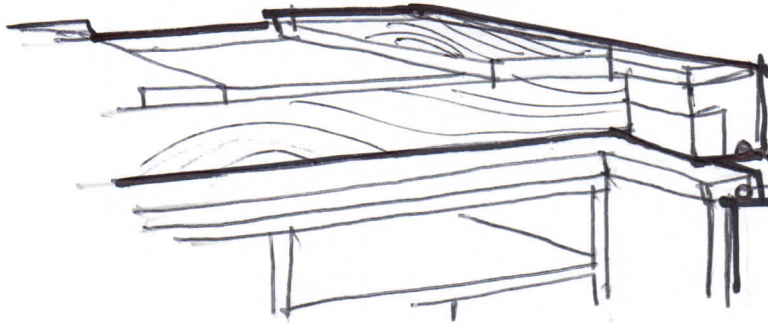


Make sure the bottom of countertop and top of cabinets are clear of any material that can block the installation when you set it down

3. Apply beads of liquid nail on the service counter cabinets. Lift the countertop carefully w/ 2 people on each side.

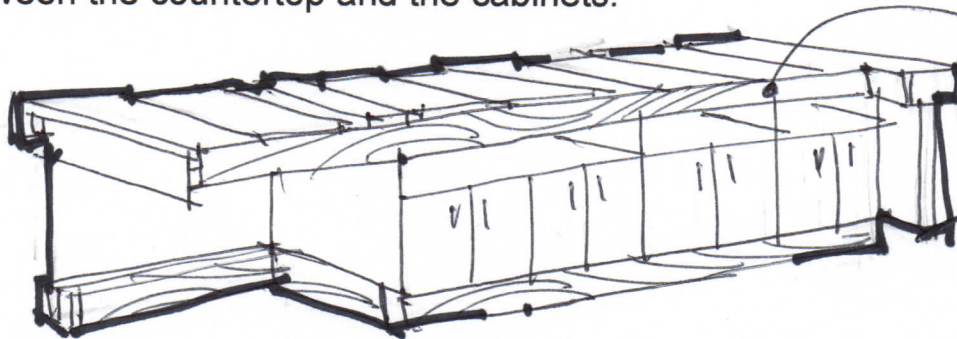


4. Align the countertop extension (8" extension on the POS side) with the side panel and lower it carefully. Make sure the countertop is set perfectly before going to the next step.



align before
setting down

5. Remove crate carefully. Remove the employee side 2x6 wood by unscrewing top supports. Make one person hold one end while unscrewing supports. Remove the end support then lift up the rest of the crate. Push counter top to front leaving no space between the countertop and the cabinets.



REMOVE
THIS
FIRST

If you have questions regarding this guide, please call or e-mail me before you start the installation.

Romy

Tel #562-841-8388

e-mail: dylton2003@yahoo.com