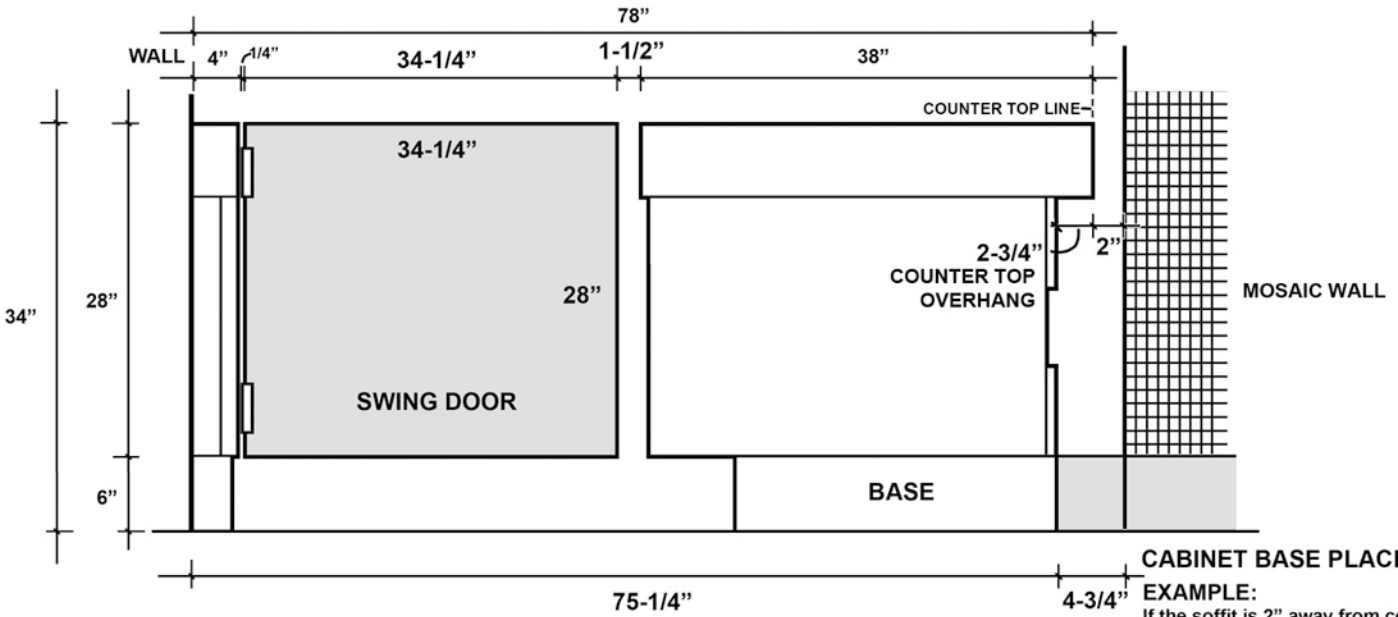




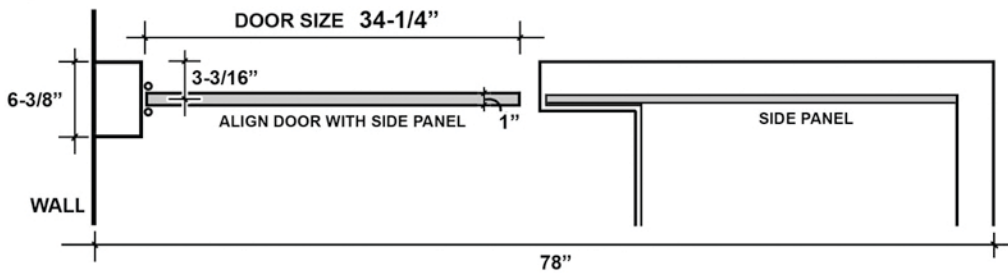
SOFFIT

SOFFIT LINES UP WITH COUNTER TOP



CABINET BASE PLACEMENT

EXAMPLE:
 If the soffit is 2" away from corner, the counter top line should also be 2".
 Set your base 4-3/4" from corner, 2" + 2-3/4" (counter top overhang)



SERVICE COUNTER CABINET BASE AND SWING DOOR PLACEMENT